

for lease

STOREFRONT/RETAIL/OFFICE

Denver, Colorado



BUILDING:

LOCATION: 1408 W. 38th Avenue
Denver, CO 80211

BUILDING SIZE: 5,850 RSF

AVAILABLE SPACE: 860 RSF

LEASE RATES: \$12.00 Modified Gross

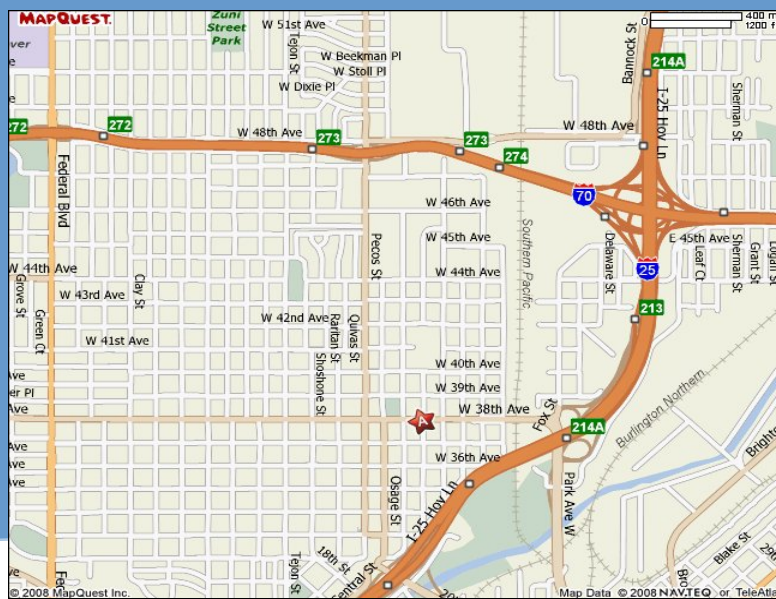
COMMENTS:

- * Easy highway access at I-25 and 38th Avenue
- * Flexible space—ideal for retail or office
- * Newer finishes—hardwood floors
- * Local ownership
- * Plug and Play Space

FOR MORE INFORMATION, PLEASE CONTACT

Rick Giarratano
John Fairbairn
Greg Titus

1873 S. Bellaire Street
Suite 1200
Denver, Colorado 80222
T 303.765.4344
F 303.226.4770



The information above has been obtained from sources believed reliable. While we do not doubt its accuracy, we have not verified it and make no guarantee, warranty or representation about it. It is your responsibility to independently confirm its accuracy and completeness. Any projections, opinions, assumptions or estimates used for example only and do not represent the current or future performance of the property. The value of the transaction to you depends on tax and other factors which should be evaluated by your tax, financial and legal advisors. You and your advisors should conduct a careful, independent investigation of the property to determine to your satisfaction the suitability of the property for your needs.