

for lease

BUILDING SPECIFICATIONS:

Location: 1430 Wynkoop Street
Denver, Colorado
Building Size: 44,604 SF
Available Space: 2,500 to 22,119 SF contiguous
Lease Rates: \$28.00 to \$32.00 Gross
Sublease Rate: \$19.50 Gross on 11,000 SF
Parking: 60 spaces
30 covered at \$200/mo.
30 surface at \$150/mo.

COMMENTS:

- Great Lodo location (directly across the Cherry Creek from Pepsi Center)
- Plug and Play space in great condition
- Easy in and out of Downtown via Auraria/Speer or 20th Avenue
- Reception, 10 offices, conference room, bull pen, kitchen/storage area, directly across the hall from restrooms



OFFICE SPACE AVAILABLE



FOR MORE INFORMATION, PLEASE CONTACT:

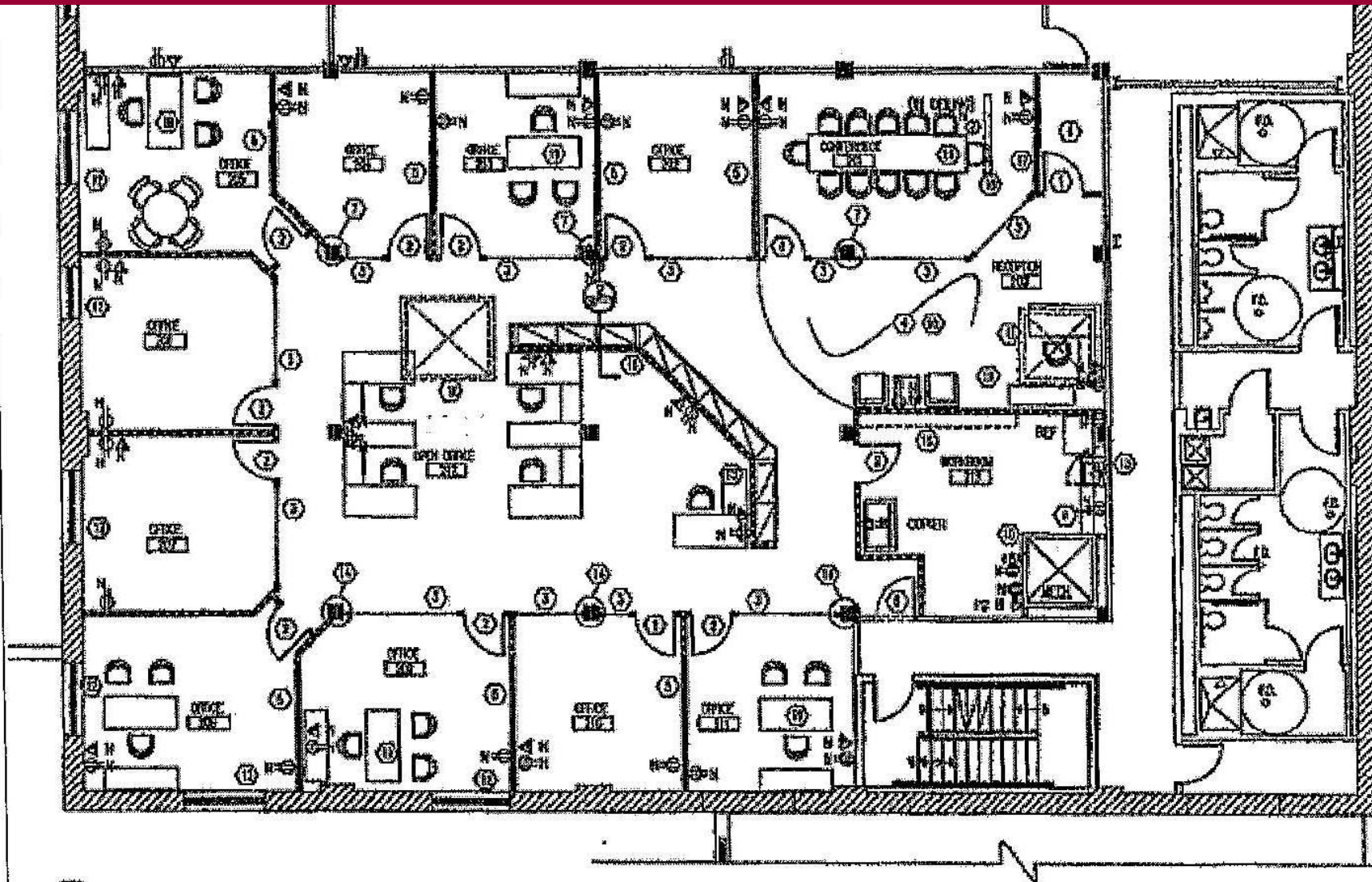

fairbairn
COMMERCIAL
www.denverofficespace.com

**John Fairbairn
Rick Giarratano**

**1873 S. Bellaire Street
Suite 1200
Denver, Colorado 80222
T 303.765.4344
F 303.226.4770**

The information above has been obtained from sources believed reliable. While we do not doubt its accuracy, we have not verified it and make no guarantee, warranty or representation about it. It is your responsibility to independently confirm its accuracy and completeness. Any projections, opinions, assumptions or estimates used for example only and do not represent the current or future performance of the property. The value of the transaction to you depends on tax and other factors which should be evaluated by your tax, financial and legal advisors. You and your advisors should conduct a careful, independent investigation of the property to determine to your satisfaction the suitability of the property for your needs.

1430 WYNKOOP STREET



1 SPACE PLAN
SP-1 SCALE: 1/8" = 1'-0"