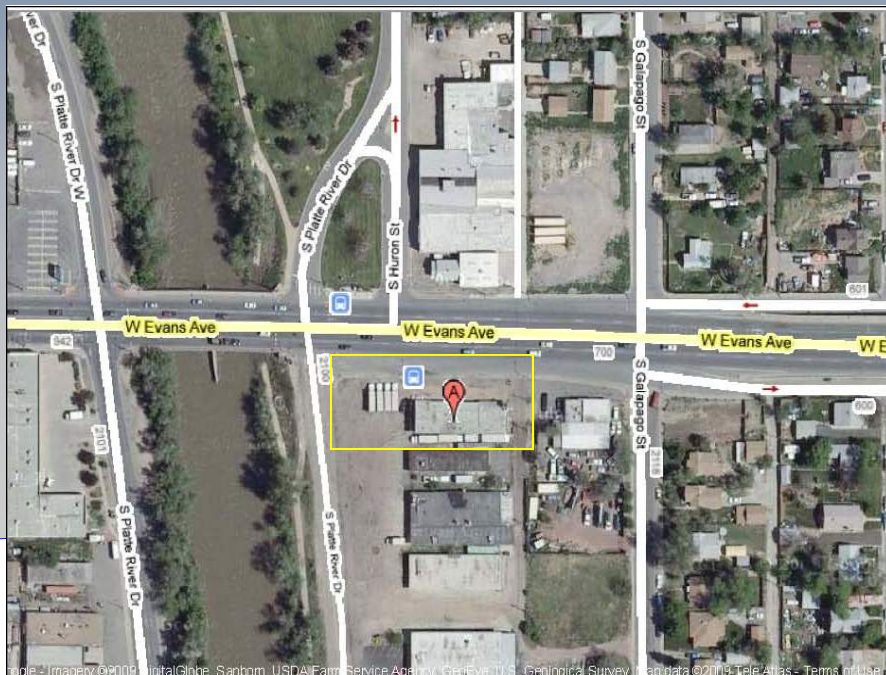


# OWNER CARRY GREAT CENTRAL LOCATION :



for  
sale



## INDUSTRIAL WAREHOUSE:

**LOCATION:** 790 W. Evans Avenue  
Denver, Colorado

**BUILDING SIZE:** 4,502 SF

**LOT SIZE:** 7,753 SF

**YEAR BUILT:** 1956

**ZONING:** IO

**PARKING:** Great Parking

## COMMENTS:

- \* OWNER CARRY
- \* GREAT LOCATION ON EVANS AND SANTA FE
- \* GREAT SIGNAGE VISIBILITY
- \* EAST ACCESS TO I-25 AND SANTA FE
- \* MULTI-USE BUILDING
- \* PERFECT FOR OWNER/USER
- \* IMMEDIATELY ON BUS STOP
- \* CORNER PROPERTY (EVANS & S. PLATTE RIVER DR.)

# SALE PRICE: \$575,000

[FOR MORE INFORMATION, PLEASE CONTACT](#)

Kevin Conners  
Greg Titus

**fairbairn**  
COMMERCIAL

[www.denverofficespace.com](http://www.denverofficespace.com)

1873 S. Bellaire Street, Suite 1200  
Denver, Colorado 80222

**303-765-4344**

The information above has been obtained from sources believed reliable. While we do not doubt its accuracy, we have not verified it and make no guarantee, warranty or representation about it. It is your responsibility to independently confirm its accuracy and completeness. Any projections, opinions, assumptions or estimates used for example only and do not represent the current or future performance of the property. The value of the transaction to you depends on tax and other factors which should be evaluated by your tax, financial and legal advisors. You and your advisors should conduct a careful, independent investigation of the property to determine to your satisfaction the suitability of the property for your needs.